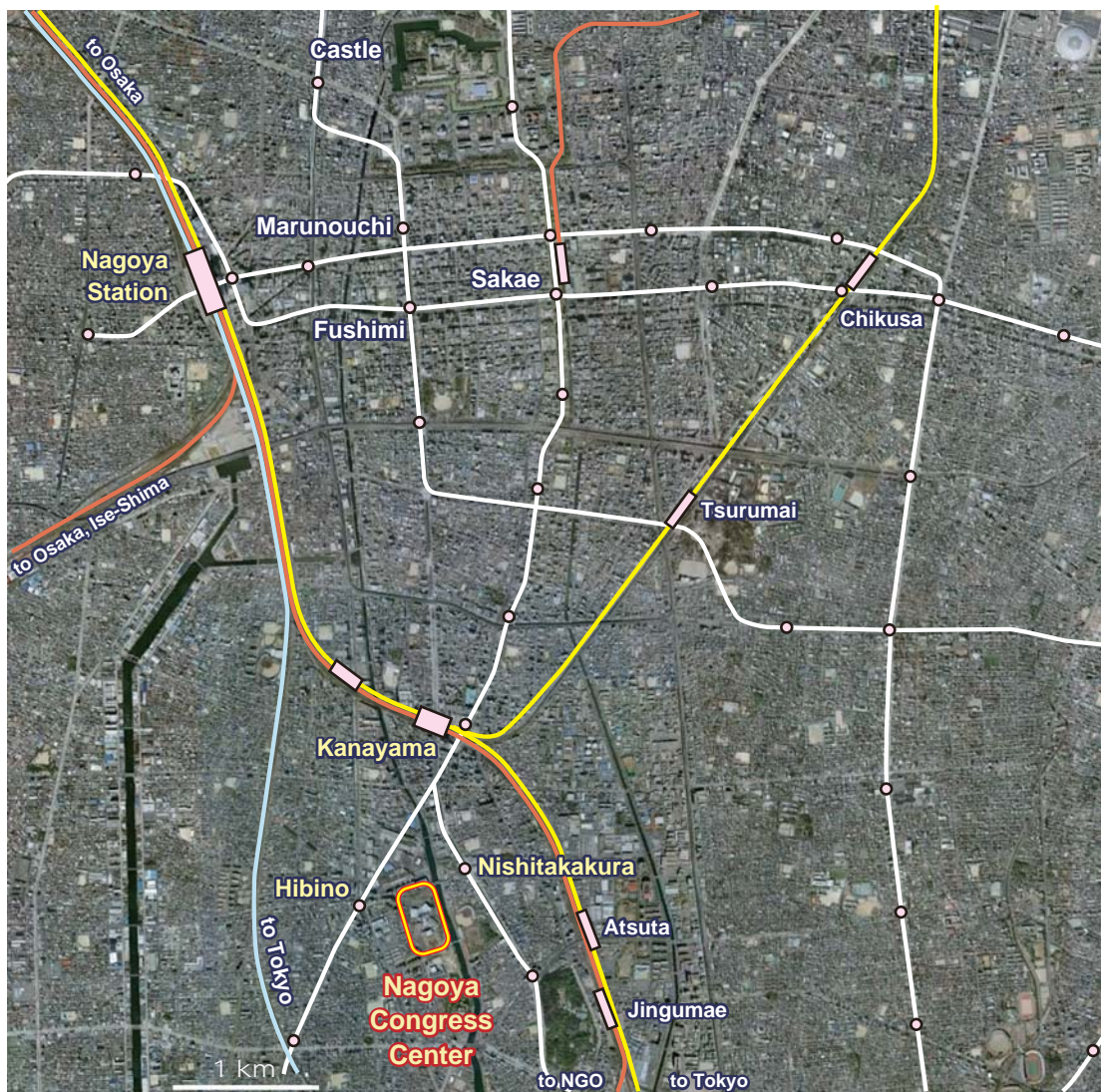


110 minutes to KIX
(Osaka-Kansai International Airport)
via Kyoto (40 minutes) and Osaka (60 minutes)

185 minutes to NRT (Tokyo-Narita International Airport)
130 minutes to HND (Tokyo-Haneda International Airport)
via Tokyo (100 minutes)



NGO: International flights: Frankfurt, Helsinki, Detroit, Bangkok, Beijing, Shanghai, Hong kong, Seoul, Taipei, and many more. Domestic flights: Sapporo, Narita, Fukuoka, Kagoshima, Okinawa and many more.



Light blue, yellow, orange, and white lines are respectively for JR bullet train (Shinkansen), JR local train, private suburban trains, and subway. Rectangular and circle on the lines are stations.